

专注美好未来

LOG[®] 朗格塑机
LOG MACHINE

中国电动注塑机先行者
THE PIONEER OF ELECTRIC INJECTION MOLDING MACHINE IN CHINA

LOG[®] 朗格塑机
LOG MACHINE

宁波创基机械股份有限公司
NINGBO CHUANGJI MACHINERY CO.,LTD.

地址：浙江省余姚市泗门镇工业区姚北大道泗门段18号
邮编：315400
电话：+86-13505782746
+86-574-62523826
传真：+86-574-62523826
服务电话：400 826 0110

www.logge.com.cn
E-mail : nbcj@logge.com.cn

FOR INTERNATIONAL BUSINESS

ADD : Simen Industrial Area , yuyao , zhejiang Province , China
P.C : 315400
TEL : +86-18395810513
+86-574-62523811
FAX : +86-574-62523806
SERVICE : 400 826 0110

www.log-machine.com
E-mail : loginjmachine@logge.com.cn



扫一扫 更多产品介绍
SCAN TO UNLOCK MORE PRODUCTS

LOG-LE-A3



Advantages of high-precise structure

高精度的结构优势

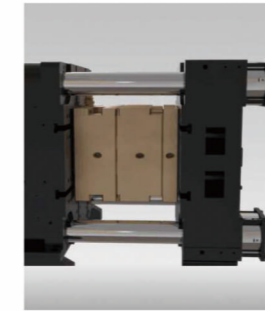
- 响应速度快
Fast-response
- 注射速度快
Fast injection speed
- 注射精度高
High-precise injection
- 独立双系统控制
Dual-independent system control

节电
20%
Energy Saving

开模熔胶
同步
Charging On Fry

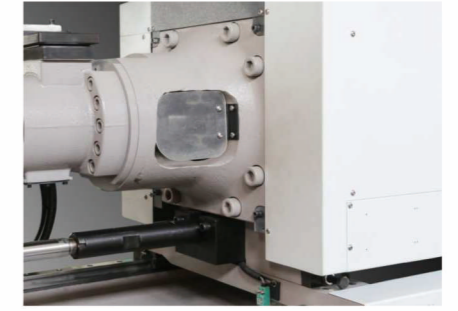
高射速
300mm/s
High Speed

重复精度
3‰
Repetition Accuracy



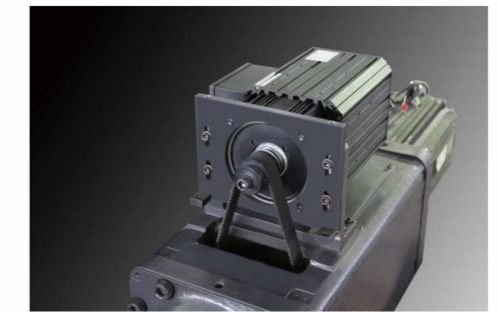
压中心模板结构

开合模平衡度，重复精度高
center pressing clamping structure
Opening and closing mold balance
high repetition precision



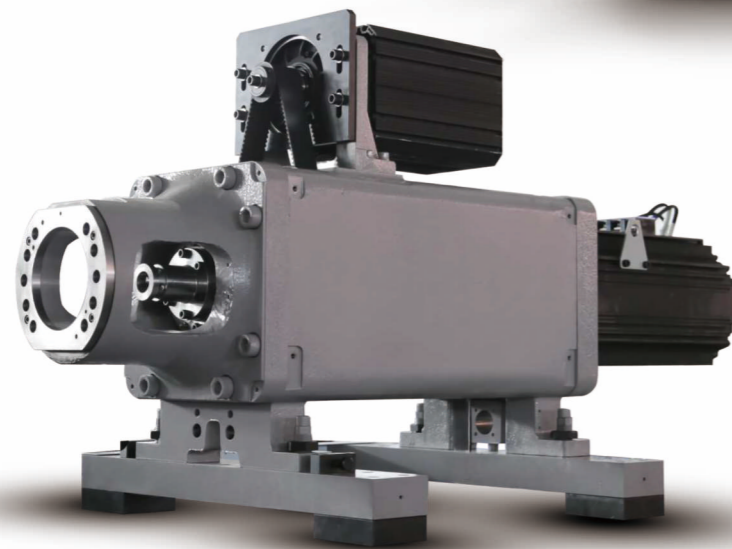
料筒安装法兰式结构

便于拆卸螺杆组件，有效的减少作业时间
Barrel Installation - Flange Type Structure,
Easy To Assembly
Reduce The Installation Time.



安装高精度的编码器和射出压力传感器

能够精确控制螺杆位置及稳定的溶胶、射出、保压、背压工程
With High Precise Encoder And Injection Pressure Sensor.
To Control The Position Of Screw & Barrel. Stablize The Charging Injecting, Keeping Pressure And Back Pressure Engineering.



以直接驱动结构为核心所设计的射出装置

反应真实的高响应，高射出控制
Direct Drive Structure For Injection Unit
High Response, effective injection control



使用高响应，低惯性伺服电机与驱动器完美匹配

达到真正闭环与高加速的目标
Highly Responsive, Low-Inertia Servo Motor Match The Driver Perfectly To Achieve The Closed Loop And High Acceleration.



全自动润滑装置

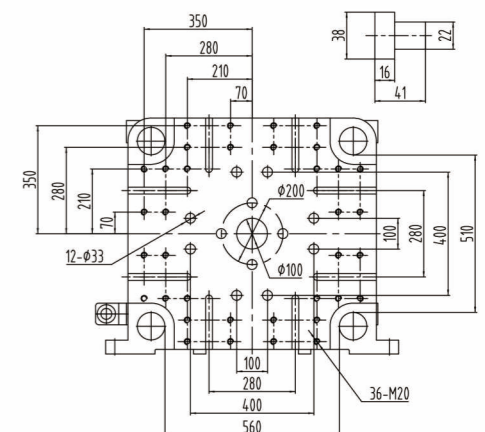
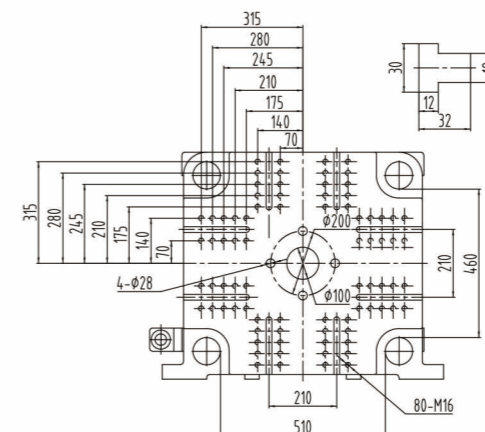
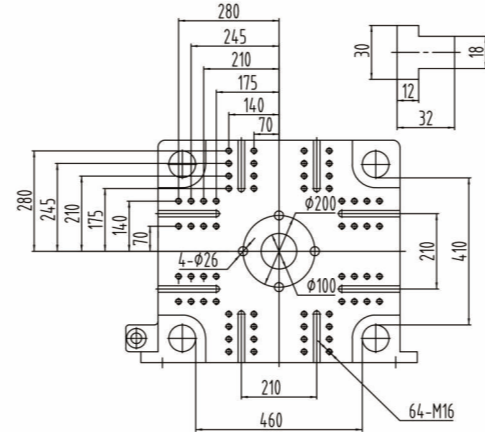
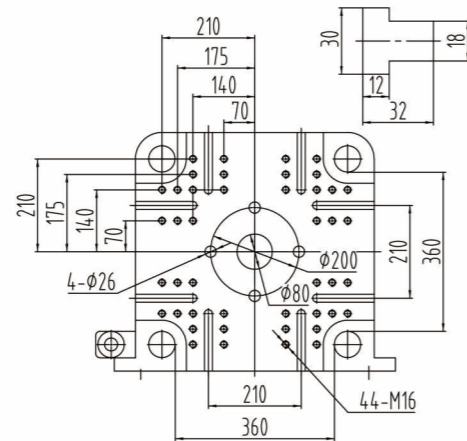
减少维护保养成本
Fully Automatic Lubrication Device
To Reduce Maintenance Cost.

技术参数

DESCRIPTION	UNIT	LOG-90LE						LOG-140LE						LOG-170LE						LOG-220LE					
		S105M			S135M			S175M			S219M			S175M			S219M			S219M			S263M		
国际公认号	INTERNATIONAL RECOGNIZED MODELS	A	B	C	A	B	C	A	B	C	A	B	C	A	B	C	A	B	C	A	B	C	A	B	C
射胶系统	INJECTION UNIT																								
理论容积	INJECTION VOLUME	38	53	62	53	62	80	86	112	142	128	162	201	86	112	142	128	162	201	128	162	201	162	201	254
理论重量 (PS)	SHOT WEIGHT(PS)	34	47	56	47	56	72	78	102	129	116	147	182	78	102	129	116	147	182	116	147	182	147	182	231
螺杆直径	SCREW DIAMETER	22	26	28	26	28	32	28	32	36	32	36	40	28	32	36	32	36	40	32	36	40	36	40	45
长径比	SCREW L:D RATIO	22.5	22	20.5	22.5	22	20.5	21.8	11	18.8	22.5	20	18	21.8	21	18.8	22.5	20	18	22.5	20	18	23	20.8	18.5
注射压力	INJECTION PRESSURE	285	207	168	260	224	172	285	218	172	280	220	171	285	218	172	280	220	171	280	220	171	260	210	165
保压压力	HOLDING PRESSURE	220	147	120	208	179	138	227	174	137	224	176	136	227	174	137	224	176	136	224	176	136	205	166	130
注射速度	INJECTION SPEED	300			300			300			300			300			300			300			300		
螺杆行程	SCREW STROKE	100			100			140			160			140			160			160			160		
螺杆转速	SCREW SPEED	300			300			300			300			300			300			300			300		
锁模系统	CLAMPING UNIT																								
锁模力	CLAMPING FORCE	900						1400						1700						2200					
开模行程	OPENING STROKE	320						380						430						480					
模板尺寸	PLATEN SIZE	540x540						670x620						740x689						805x750					
连接柱内距	SPACE BETWEEN TIE BARS	360x360						460x410						510x460						560x510					
容模量	MOLD THICKNESS	150-360						180-500						200-550						220-600					
模板最大行程	PLATEN MAX STROKE	680						880						980						1080					
油压顶出行程	EJECTOR STROKE	100						120						140						150					
油压顶出力	EJECTOR FORCE	31						42						50						67					
动力/电热	POWER/ELECTRIC HEATING																								
最大油泵压力	MAX PUMP PRESSURE	16			16			16			16			16			16			16			16		
电机功率	HEATING POWER	29.5/6.3/14			36/8.6/14			31.4/10.1/18.2			37.7/14/18.2			31.4/10.1/23			37.7/14/23			37.7/14/29			37.7/21.5/29		
电热量	HEATING ZONES	3+射嘴			3+射嘴			4+射嘴			4+射嘴			4+射嘴			4+射嘴			4+射嘴			4+射嘴		
其他	OTHER																								
循环时间	DRY CYCLE TIME	1.1			1.1			1.3			1.3			2.0			2.0			4.5			4.5		
外形尺寸	MACHINE DIMENSION	4.57*1.04*2			4.57*1.04*2			5.15*1.2*2.05			5.15*1.2*2.05			5.32*1.27*2.11			5.32*1.27*2.11			5.94*1.41*2.14			5.94*1.52*2.23		

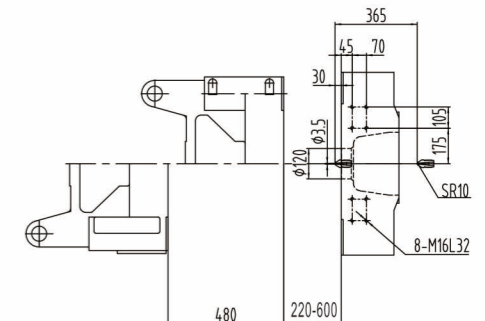
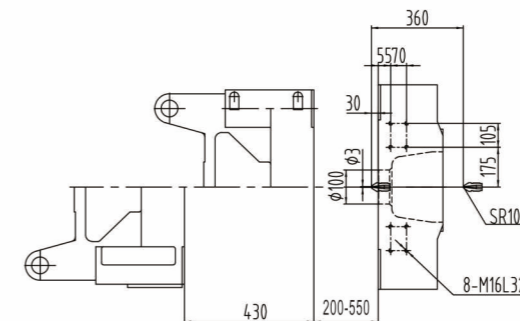
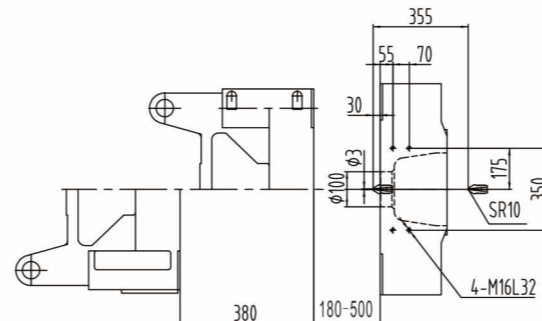
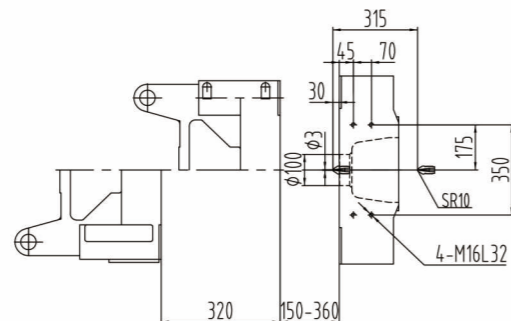
模板正面尺寸
Platen dimensions

Moving platen



模板侧面尺寸
Platen dimensions

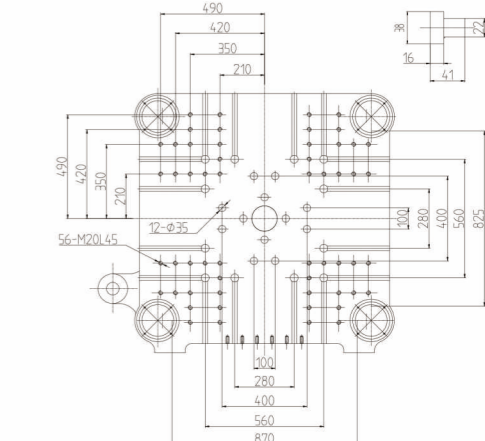
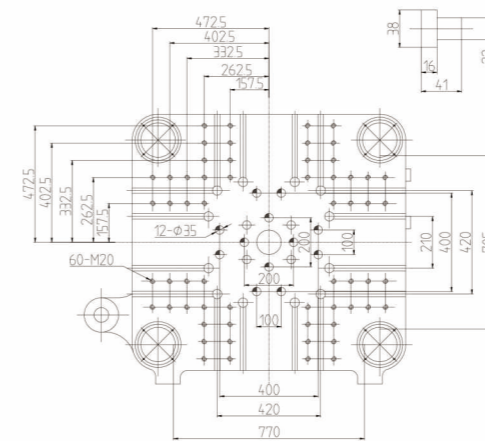
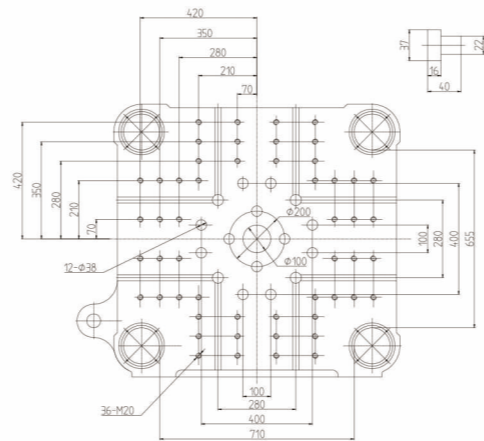
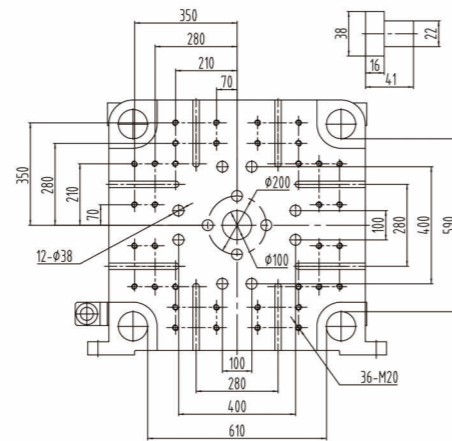
Mounting hole for robot/sprue picker top view from fixed platen



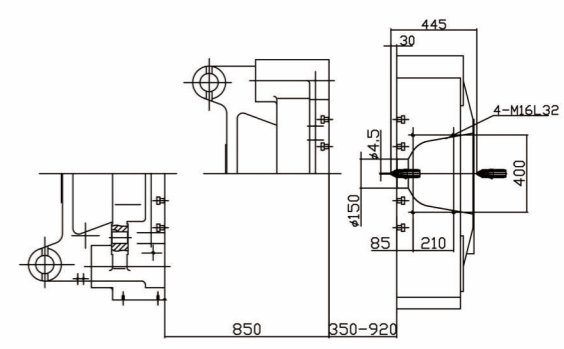
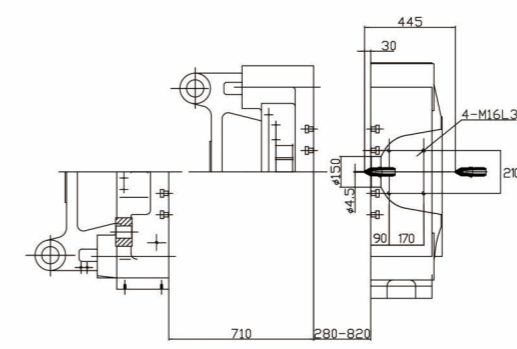
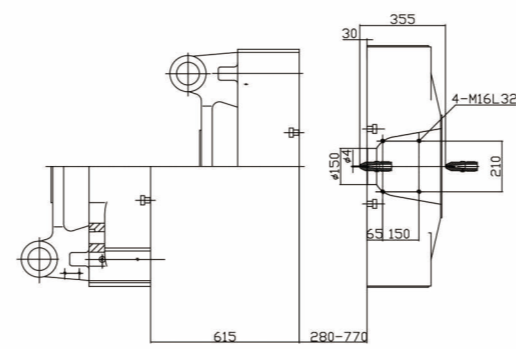
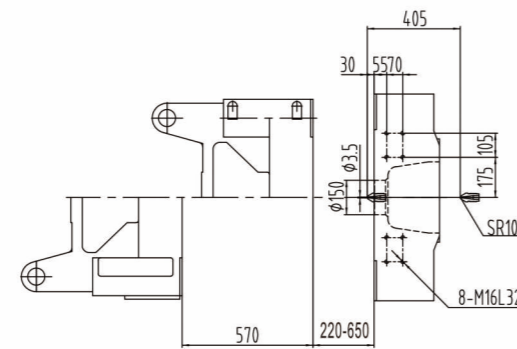
技术参数

DESCRIPTION 国际公认号 射胶系统 理论容积 理论重量 (PS) 螺杆直径 长径比 注射压力 保压压力 注射速度 螺杆行程 螺杆转速 锁模系统 锁模力 开模行程 模板尺寸 连接柱内距 容模量 模板最大行程 油压顶出行程 油压顶出力 动力/电热 最大油泵压力 电机功率 电热量 加热控制区数 其他 循环时间 外形尺寸	INTERNATIONAL RECOGNIZED MODELS INJECTION UNIT INJECTION VOLUME SHOT WEIGHT(PS) SCREW DIAMETER SCREW L:D RATIO INJECTION PRESSURE HOLDING PRESSURE INJECTION SPEED SCREW STROKE SCREW SPEED CLAMPING UNIT CLAMPING FORCE OPENING STROKE PLATEN SIZE SPACE BETWEEN TIE BARS MOLD THICKNESS PLATEN MAX STROKE EJECTOR STROKE EJECTOR FORCE POWER/ELECTRIC HEATING MAX PUMP PRESSURE HEATING POWER HEATING ZONES OTHER DRY CYCLE TIME MACHINE DIMENSION	单位 UNIT	LOG-270LE			LOG-320LE			LOG-400LE			LOG-530LE								
			S263M	S422M	S529M	S422M	S529M	S422M	S529M	S422M	S529M	S422M	S529M							
A	B	C	A	B	C	A	B	C	A	B	C	A	B	C	A	B	C			
162	201	254	337	416	521	377	416	521	510	640	810	337	416	521	510	640	810			
147	182	231	307	378	475	307	378	475	464	582	736	307	378	475	464	582	736			
36	40	45	45	50	56	45	50	56	50	56	63	45	50	56	50	56	63			
23	20.8	18.5	20	22	20	20	22	20	20	22	20	20	22	20	20	22	20			
260	210	165	251	203	162	251	203	162	254	203	160	251	203	162	254	203	160			
205	166	130	201	162	129	201	162	129	204	162	128	201	162	129	204	162	128			
300			300			300			250			300			250					
160			212			212			260			212			260					
300			300			300			240			300			240					
2700			3200			4000			5300											
570			615			710			850											
875x855			1050x990			1130x1060			1250x1220											
610x590			710x655			770x705			870x825											
220-650			280-770			280-820			350-920											
1220			1385			1530			1770											
160			160			185			210											
77			77			111			111											
16			16			16			16											
37.7/21.5/36.7			50.3/24.5/6.7			68/24.5/45.2			88/24.5/77.4											
13.5			17.3			25.6			25.6											
4+射嘴			4+射嘴			4+射嘴			4+射嘴											
4.8			4.8			5.0			5.2											
6.51*1.52*2.23			6.51*1.52*2.23			7.7*1.63*2.35			7.7*1.63*2.35			8.6*1.95*2.35			8.6*1.95*2.35			9.2*1.96*2.41		

模板正面尺寸
Platen dimensions
Moving platen



模板侧面尺寸
Platen dimensions
Mounting hole for robot/sprue picker top view from fixed platen



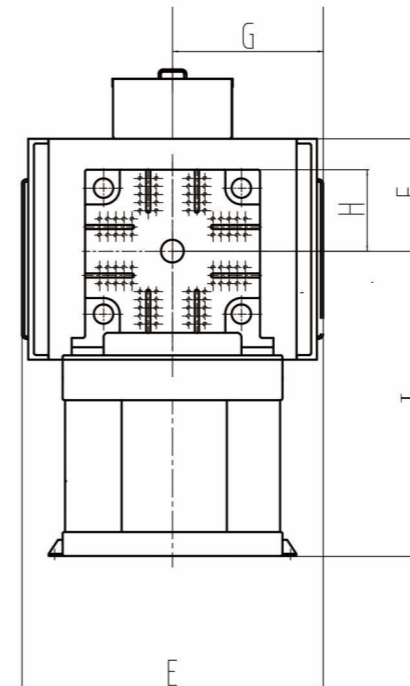
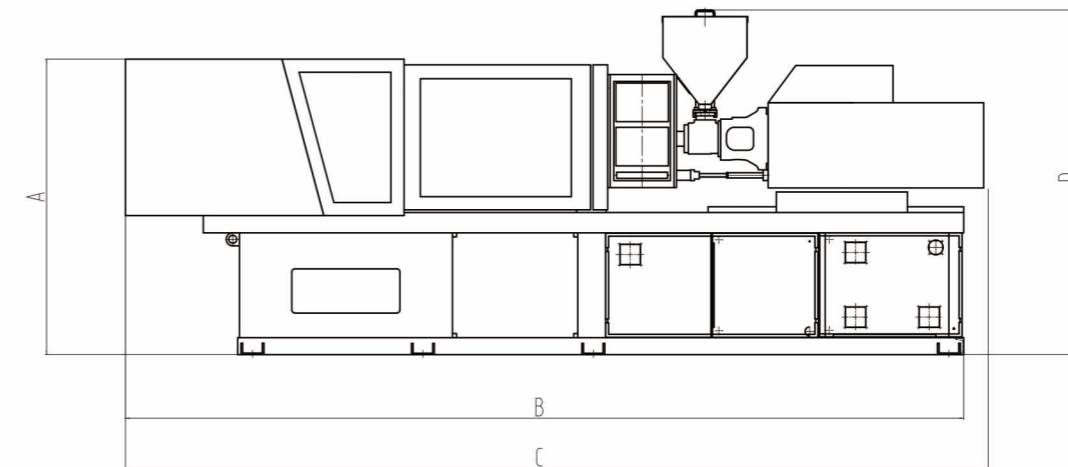
机器尺寸

Machine dimension parameters

型号	A	B	C	D	E	F	G	H	I
LOG-90LE	1610	4470	4620	2000	1040	355	525	270	1255
LOG-140LE	1730	4846	4996	2050	1190	435	585	315	1295
LOG-170LE	1804	5115	5265	2110	1270	451	625	355	1353
LOG-220LE	1870	5640	5790	2137	1410	480	695	390	1390
LOG-270LE	2070	6210	6360	2235	1514	600	745	445	1470
LOG-320LE	2051	7006	7366	2336	1797	620	800	500	1431
LOG-400LE	1960	7725	8070	2427	1993	615	880	535	1345
LOG-530LE	2010	8249	8599	2387	1908	670	915	610	1340

示意图

Sketch Map



我们的服务

Our service

灵活快捷的售前支援

Flexible and fast pre-sale service

我们根据客户加工的产品种类以及所用原材料的不同，提出“量身定做”理念并实施，以合理的价格、较高的品质、交货周期短，来满足不同客户的特殊需求。

According to the different o customers product types and raw materials, we put forward the tailored concept and implement with reasonable high quality, short delivery cycle to meet the customers special needs.

体贴入微的售中服务

Considerate in-sale service

创基公司秉承“微笑第一，服务三问”的售中服务理念，深入公司部门各网点，使得用户在使用朗格塑机的同时感觉到快乐和自信，产品交易保持着“零误差”这种细致体贴的服务使朗格塑机在同行中保持着良好的口碑。

We adhere to the service concept "smile first & three questions", and go deep into the branches of the company, so that users feel happy and confident when using LOG machines, and the product transaction maintains zero error. This kind of considerate service makes LOG machine maintain a Flexible and fast pre-sale service good reputation among the peers.

优秀完美的售后服务

Excellent and perfect after-sales service

创基公司利用自身良好而快捷的服务已覆盖全国的技术服务中心，对购买朗格塑机的客户进行及时、有效的售后服务，创基承诺对朗格塑机的质量无法确认责任归宿时，由创基公司承担相应责任。

We have technical service center for our customers. We offer efficient and timely after-service for the customers.

技术精湛的专业人员

Highly skilled technicians

创基人会以良好的服务赢得您的赞誉，会以热诚忘我的精神赢得您的感动，更会以精湛的技术赢得您对朗格塑机的信任。

We will win your praise with good service, touch you by the spirit of dedication, and I win your trust with exquisite technology.



LOG 朗格塑机
LOG MACHINE

全国24小时服务热线
24 HOURS SERVICE HOT LINE
400 826 0110